

”Give me a dozen healthy infants, well-formed, and my own specified world to bring them up in and I’ll guarantee to take any one at random and train him to become any type of specialist I might select--doctor, lawyer, artist, merchant-chief, and, yes, even beggarman and thief, regardless of his talents, penchants, tendencies, abilities, vocations, and race of his ancestors.”

John B. Watson, *Behaviorism*, 1930

Contact Details:

If you would like any additional information on the course please do not hesitate to contact us.

Head of Department:

Miss Candice Russell
Ext. 203
C.russell@collingwood.surrey.sch.uk

Subject specialist:

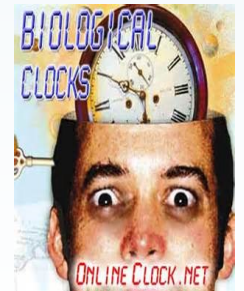
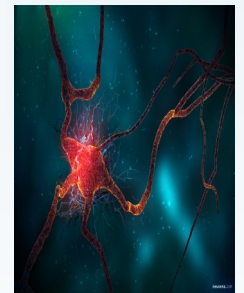
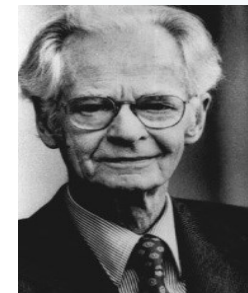
Mrs Claire Charman
C.charman@collingwood.surrey.sch.uk

Collingwood College:
Kingston Road
Camberley
Surrey GU15 4AE

Phone: 44 (0)1276 457 600
Fax: 44 (0)1276 457 610

Collingwood College

A Level Psychology



What is Psychology?

Psychology is the study of the thought processes and behaviour of humans and other animals in their interaction with the environment. Psychologists study processes of sense perception, thinking, learning, cognition, emotions and motivations, personality, abnormal behaviour, interactions between individuals, and interactions with the environment.

Psychologists work in a number of different settings, including universities and colleges, primary and secondary schools, government agencies, private industry, hospitals, clinics, and private practices.

The investigative and analytical research skills you gain will be invaluable for most university courses; Psychology has a wide application in the Media, marketing, advertising, management, medicine and law, but would be an advantage in any career working with people.

Entry Requirements

Minimum of 5 GCSEs at Grade 9-4 (or equivalent) including English, Mathematics and Science. Experience shows that your chances of success in this subject are greater if you have a **Grade 5 in Science and English Language**.

Who is the course suitable for?

Students with an enquiring, open mind, particularly those who are prepared to look at issues from different perspectives and are comfortable with science. An interest in why people behave like they do. A willingness to be involved in discussions is essential.

A Level Qualification Course Content

Paper 1

Social psychology

How and why people conform in group situations and obey authority figures. What makes someone an independent thinker, including locus of control. We also look at the ethical issues associated with social psychological experiments.

Cognitive psychology

Students study different models of memory and the implications of research into the reliability of memory for example the reliability of eyewitness testimony in court.

Developmental psychology

How and why children form an attachment to their caregiver/parent. Influence of the father on a child's development. The influence of attachment style on later adult relationships.

Psychopathology

This topic looks at the way mental illness is diagnosed and treated, specifically concentrating on Depression, Phobias and OCD.

Paper 2

Research Methods

A look at some of the scientific techniques used by psychologists to ensure that their findings are accurate and valid. Students also need to examine the ethics involved in working with human subjects. Will need to have sound mathematical ability to be able to demonstrate application of appropriate inferential tests, the reporting of psychological investigations and fundamentals of the scientific method.

Biopsychology

This topic involves divisions of the nervous system and synaptic transmission. Localisation of brain function and plasticity of the brain following trauma. Biological Rhythms and the flight/fight response

Approaches in Psychology

This topic looks at the basic approaches to psychology including behaviourism, cognitive psychology and biological psychology

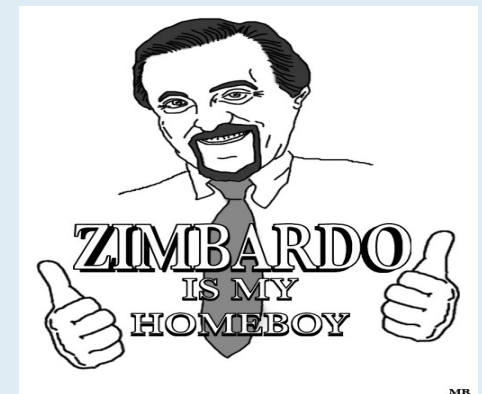
Paper 3:

Issues and debates: nature v nurture, holism v reductionism, free will v determinism, gender and culture bias., ethical considerations.

Options in Psychology: Three options to study. Gender, Aggression and Schizophrenia

Assessment:

Exams: Three exams in May/June of 2hrs each.



[Find out why Zimbardo is our homeboy!](#)